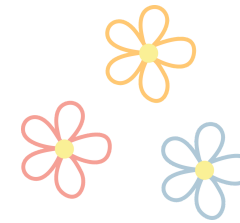


April Menu



Lunch Menu 2025-2026

Child & Family Centers of Excellence - National Centers for Learning Excellence

MONDAY



TUESDAY



WEDNESDAY

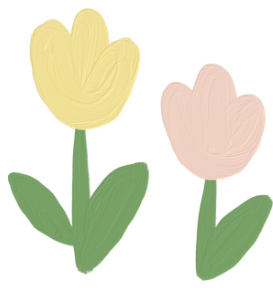


THURSDAY

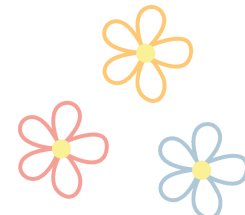


FRIDAY

<p>Chicken Alfredo with WG pasta casserole Green beans Parmesan cheese Fruit & 1% Milk</p> <p style="text-align: right;">30</p>	<p>Hot roast beef in gravy WG dinner roll Steamed carrots Fruit & 1% Milk</p> <p style="text-align: right;">31</p>	<p>WG Cheese ravioli in marinara w/mozzarella Winter blend vegetables Fruit & 1% Milk</p> <p style="text-align: right;">1</p>	<p>Seasoned baked fish w/tartar Malibu vegetables WG bread stick Fruit & 1% Milk</p> <p style="text-align: right;">2</p>	<p>Hot /cold ham and sliced cheese, WW roll Pickles, mayo, mustard cauliflower w/ cheese mayo Assorted Fruit & 1% Milk</p> <p style="text-align: right;">3</p>
<p>WG Boneless wing or popcorn chicken sauce, HM Hearty soup WG bread stick or oyster crackers Fruit & 1% Milk</p> <p style="text-align: right;">6</p>	<p>White meat turkey in gravy Mashed potatoes Corn Dinner roll WG Fruit & 1% Milk</p> <p style="text-align: right;">7</p>	<p>Chicken and enriched long grain and wild rice casserole Peas on side Fruit & 1% Milk</p> <p style="text-align: right;">8</p>	<p>Warm ham slices Sweet potato pieces w/ketchup Enriched rye bread Fruit & 1% Milk</p> <p style="text-align: right;">9</p>	<p>Special menu day Fruit & 1% Milk</p> <p style="text-align: right;">10</p>
<p>BBQ Riblet tater circles w/ketchup WG dinner roll Fruit & 1% Milk</p> <p style="text-align: right;">13</p>	<p>Multigrain Tortilla w/ plain chicken strips unbreaded cheese slices, Cucumber and tomato slices, mayo Fruit & 1% Milk</p> <p style="text-align: right;">14</p>	<p>WG Spaghetti w/meatballs garden salad w/dressing parmesan cheese Fruit & 1% Milk</p> <p style="text-align: right;">15</p>	<p>Chicken breast grilled in gravy corn and lima beans Enriched rice pilaf Fruit & 1% Milk</p> <p style="text-align: right;">16</p>	<p>Fish wedge/fillet cheese tartar HM soup cream style oyster crackers or WG bun Fresh cut Fruit salad & 1% Milk</p> <p style="text-align: right;">17</p>
<p>Cheeseburger w/ketchup WW Enriched buns pickle slices Baked beans Fruit & 1% Milk</p> <p style="text-align: right;">20</p>	<p>Chicken taco shredded lettuce, diced tomato, shredded cheese, salsa Multigrain Tortilla shell Fruit & 1% Milk</p> <p style="text-align: right;">21</p>	<p>Sous vide Chicken breast enriched Spanish rice on side Garden salad w/ dressing Fruit & 1% Milk</p> <p style="text-align: right;">22</p>	<p>Baked breaded pork chop mashed sweet potatoes Enriched rye Fruit & 1% Milk</p> <p style="text-align: right;">23</p>	<p>WG Cheese tortellini in marinara –parmesan cheese Dowadittie chicken or nuggets Italian blend vegetables Fresh Fruit salad & 1% Milk</p> <p style="text-align: right;">24</p>
<p>Grilled Italian chicken breast WW dinner roll Peas and carrots Fruit & 1% Milk</p> <p style="text-align: right;">27</p>	<p>WG Lasagna roll up in marinara parmesan cheese Garden salad w/ dressing Fruit & 1% Milk</p> <p style="text-align: right;">28</p>	<p>BBQ Shredded pork WG sliced bun Corn Fruit & 1% Milk</p> <p style="text-align: right;">29</p>	<p>Roast beef in gravy Long grain and wild garden rice Beets Fruit & 1% Milk</p> <p style="text-align: right;">30</p>	<p>WG Flat bread / focaccia Turkey pepperoni cheese /or BBQ chicken pizza Raw vegetables w/ranch Assorted Fruit & 1% Milk</p> <p style="text-align: right;">1</p>



April Menu



**Breakfast Menu
2025-2026**

Child & Family Centers of Excellence - National Centers for Learning Excellence

MONDAY



TUESDAY



WEDNESDAY



THURSDAY



FRIDAY

<p>WG French toast w/spread 30 Cinnamon sugar Fruit & 1% Milk WW English muffin Soy butter or jelly Raisins, B-T-2's Applesauce 1% Milk</p>	<p>WG Cereal 31 Fruit & 1% Milk WG Crackers Raw vegetables w/dip-ranch 1% Milk</p>	<p>WG Pancakes w/ syrup 1 Turkey links Fruit & Milk 1% WG Crackers Cheese spread Fruit & 1% Milk</p>	<p>WG Roll/bagel 2 Warm Canadian bacon Fruit & 1% Milk WG Muffin Fruit & 1% Milk</p>	<p>WG Waffles Syrup 3 Fruit & 1% Milk WG Graham crackers Fruit & Water</p>
<p>WG Pancakes w/syrup 6 Fruit & 1% Milk WG Crackers, Soy butter Fruit & 1% Milk</p>	<p>WG Cereal 7 Fruit & 1% Milk WG Muffin Fruit & 1% Milk</p>	<p>Omelet, WW toast 8 w/spread Fruit & 1% Milk Yogurt, WG Crackers or cereal as topping Fruit & Water</p>	<p>WG Mini croissant / bun 9 Egg patty Fruit & 1% Milk Cheese spread WG crackers Fruit & 1% Milk</p>	<p>WG English muffin w/ jam 10 Fruit 1% Milk WG graham style crackers Fruit & 1% Milk</p>
<p>WG Pancakes w/ Syrup 13 Fruit & 1% Milk Cheese spread WG crackers Fruit & 1% Milk</p>	<p>WG Cereal 14 Fruit 1% Milk Yogurt WG graham crumbs /cereal as topping Fruit & 1% Milk</p>	<p>WG Toast/croissant 15 Egg patty Oranges & 1% Milk WG Cereal mix cheerios-crispix-chex-kix Fruit & 1% Milk</p>	<p>Warm WG Biscuit 16 Chicken sausage patty Fruit & 1% Milk WG Crackers Raw vegetables/ ranch Fruit & Water</p>	<p>WG Breakfast bread 17 Fruit & 1% Milk WG Crackers Fruit & Water</p>
<p>WG Waffles w/ syrup 20 Yogurt Fruit & 1% Milk String cheese WG Cracker/pretzel Fruit & 1% Milk</p>	<p>WG Cereal 21 Fruit & 1% Milk Sun/ Soy butter WG Crackers Fruit & 1% Milk</p>	<p>WG Enriched toast 22 Omelets Fruit & 1% Milk WG Crackers Raw vegetables w/dip 1% Milk</p>	<p>WG French toast w/ cinnamon sugar 23 Turkey sausage links Fruit & 1% Milk WG assorted muffins Fruit & 1% Milk</p>	<p>Enriched raisin bread/ spread 24 Fruit & 1% Milk Whole grain snack mix Fruit & Water</p>
<p>Toasted swirl cinnamon bread 27 w/spread Fruit & 1% Milk Multi Grain tortilla Sun butter Fruit & 1% Milk</p>	<p>WG Cereal 28 Fruit & 1% Milk Cheese stick or spread pretzels Fruit & 1% Milk</p>	<p>WW Toast w/spread 29 Scrambled eggs Fruit & 1% Milk WG Crackers Raw vegetables w/dip 1% Milk</p>	<p>WG Sausage wrapped 30 pancakes Fruit & 1% Milk Sliced apple-mandarin orange salad w/cinnamon sugar WG graham crackers 1% Milk</p>	<p>WG English muffin 1 Jam Fruit & 1% Milk WG Rice cakes b-t-2 graham crackers Fruit & Water</p>